

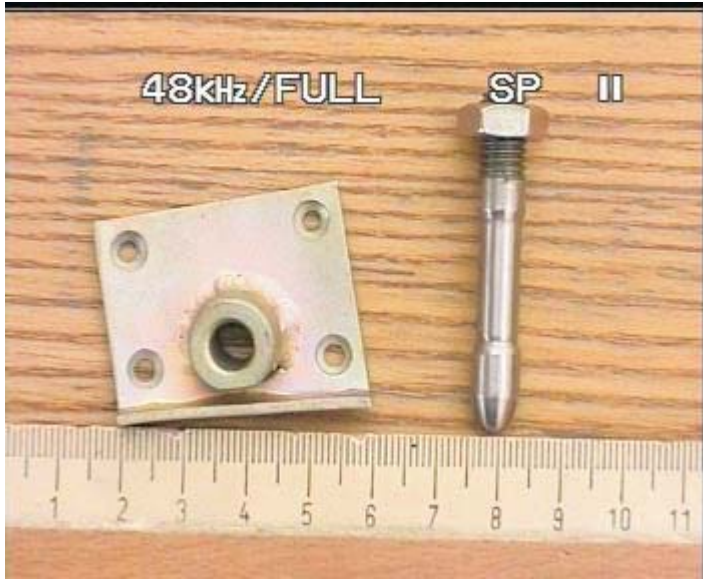
TECHNOLOGICAL PROCESS 304-14-9

INSTALLATION OF ROGER RELEASE MECHANISM

CONTENT:

- 1) PARTS**
- 2) INSTALLATION**
- 3) FUNCTION**

1) PARTS



304-14-9/1 ATTACHMENT FITTING & 304-14-9/2 PIVOT PIN



REAR PIVOT HOOK / COMPLET



304-14-9/3-1 GUIDE SPRING & 304-14-9/3-2 ATTACHEMENT FITTING



REAR GUIDE SPRING / COMPLET



304-14-9/3-3
FRONT ACTUATING SPRING

INTENTIONALLY LEFT BLANK

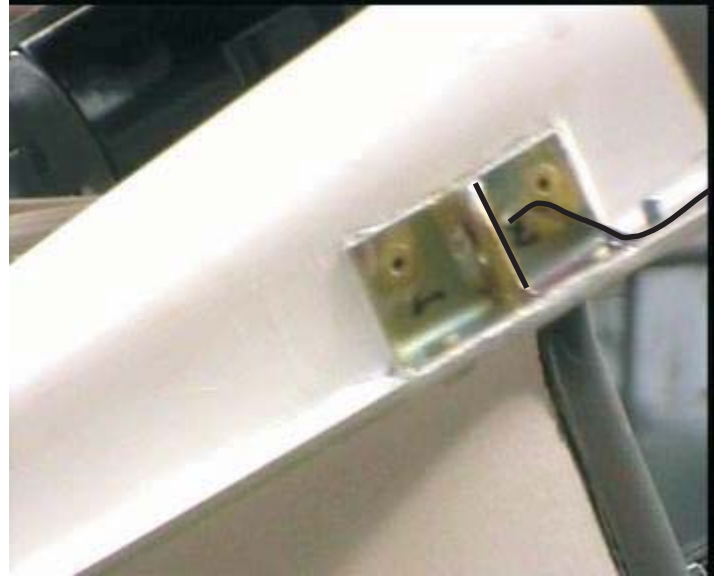
2.1 INSTALLATION OF ACTUATING SPRINGS

APPLICABLE FOR LEFT & RIGHT SIDE



INSTALLATION TOOLING

- 1) RIVET TONGS
- 2) DRILL



FRONT ACTUATING SPRING POSITION :

ALLOW 4 MM GAP AFT FROM SIDE CANOPY ATTACHMENT TO FRONT OF THE SPRING



DRILL THE ACTUATING SPRING TOGETHER WITH THE INSTRUMENT PANEL



USE 2 BLIND RIVETS PER 1 SPRING



DETAIL OF FRONT ACTUATING SPRING



DETAIL OF AFT ACTUATING SPRING



DETAIL OF ACTUATING SPRING -
RIVETS IN INVERT POSITION



2.2 INSTALLATION OF THE REAR PIVOT POINT

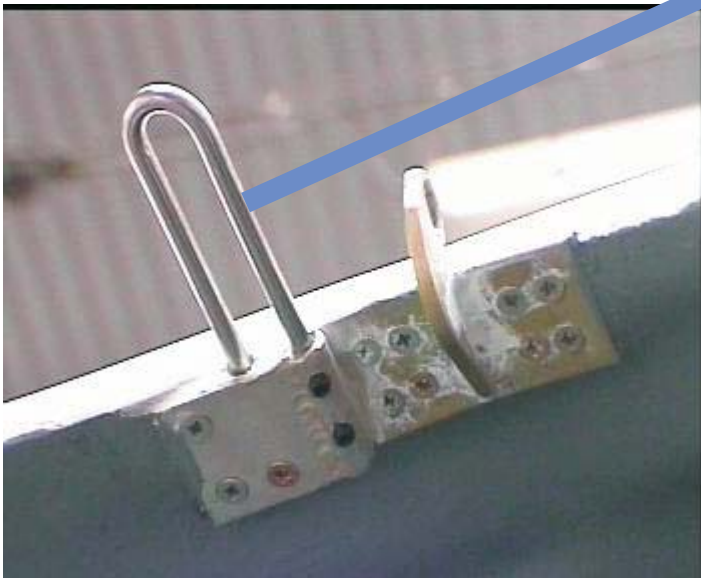
POSITION RELATIVELY
TO THE REAR CANOPY
LOCK



CAUTION - FIRST STEP
REAR PIVOT PIN SHOULD BE
INSTALLED VERTICALLY



THE GUIDE SPRING IS INSTALLED
IN RELATION TO THE PIVOT PIN





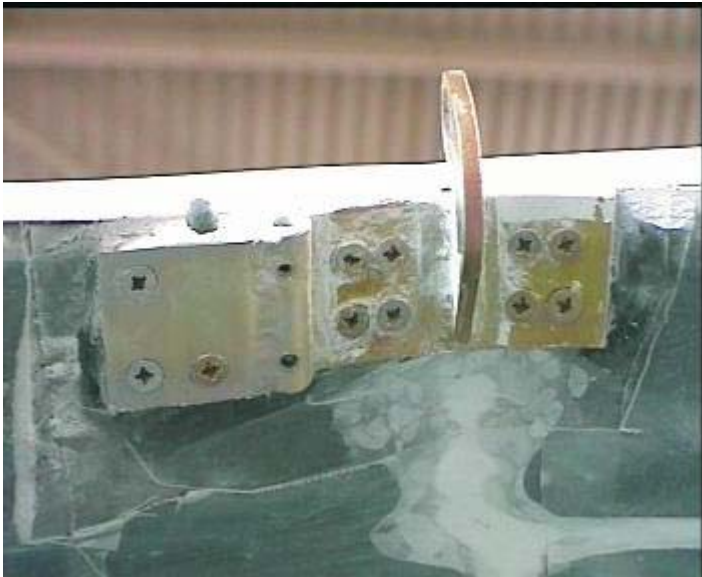
VIEW FROM REAR

- 1) MARK THE RIGHT POSITION OF THE PIVOT PIN FITTING
- 2) SAND OFF THE APPROPRIATE AREA OF CANOPY FRAME
- 3) THE PIVOT PIN SHOULD BE VERTICAL
- 4) APPLY APPROPRIATE AMOUNT OF EPOXY & COTTON MIXTURE ON THE SANDED AREA
- 5) FASTEN THE FITTING TO THE FRAME USING THE WOODSREWS, BUT ONLY SLIGHTLY - THE PIN SHOULD STAY VERTICAL



THE EPOXY HAVE TO BE HERDENED AT LEAST 24 HOURS THE TEMPERATURE DURING GLUEING AND HARDENING SHOULD BE 24°C AT LEAST





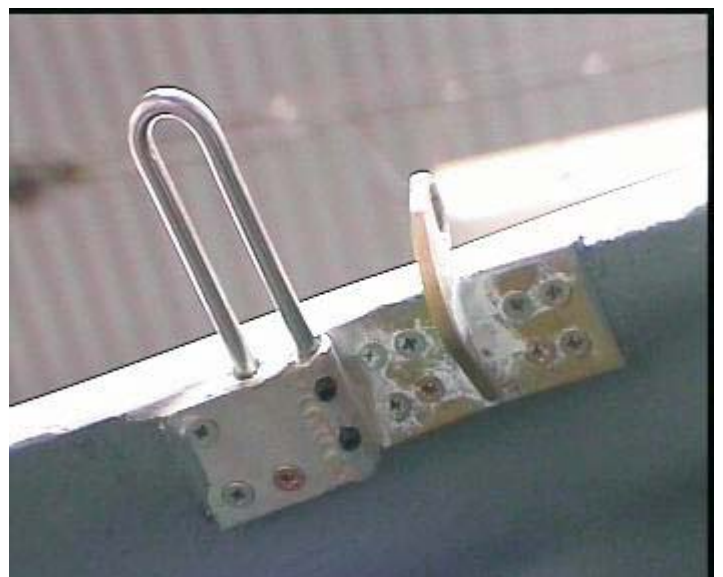
VIEW FROM BOTTOM

- 1) MARK THE RIGHT POSITION OF THE SPRING FITTING >
 - a) SIT IN THE COCKPIT AND CLOSE THE CANOPY WITH THE PIVOT PIN INSTALLED AND HARDENED
 - b) PUT THE COMPLETE GUIDE SPRING ON THE PIN AND FITTING ON THE INNER FUSELAGE FRAME - THE SPRING SHOULD LINE PARALLEL WITH LONGITUDINAL AXIS
- 2) SAND OFF THE APPROPRIATE AREA OF FUSELAGE FRAME UNDER THE FITTING
- 3) THE PIVOT PIN SHOULD BE VERTICAL
- 4) APPLY APPROPRIATE AMOUNT OF EPOXI & COTTON MIXTURE ON THE SANDED AREA
- 5) FASTEN THE FITTING TO THE FRAME USING THE WOODSREWS, BUT ONLY SLIGHTLY - THE PIN SHOULD STAY VERTICAL



CAUTION

THE SPACE BETWEEN THE INNER FUSELAGE SKIN AND THE FITTING SHOULD BE MADE OF COTTON & AEROSIL FILLED EPOXY



3. FUNCTION



1. SET THE CANOPY



4. ASSISTANS HEPLS
PROTECT THE CANOPY



2. CLOSE THE CANOPY



5. AFT PIVOT PIN HOLDS
REAR EDGE OF CANOPY
FRAME. THE AIR LIFT ONLY
FRONT PART



3. TEST THE CANOPY
JETTISON



6. THE INSTRUMENT PANEL
RISES TO PROTECT THE
PILOT FROM INJURY