



HpH
sailplanes



GO ELECTRIC, GO SHARK RES!



SHARK RES



SHARK RES

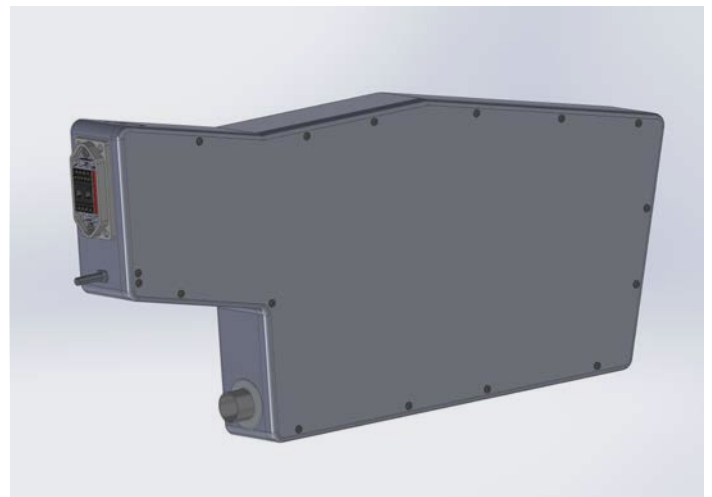
UNMATCHED PERFORMANCE

The Retractable Electric System (RES) offers unparalleled performance with exceptional power-to-weight ratios. Carefully engineered for maximum flexibility, it is aimed at contest pilots seeking low minimum wing loading as well as leisure pilots desiring self-launch options even at higher wing loadings.

With its multiple battery configurations, the RES ensures unmatched wing loading flexibility, setting new standards in aviation excellence.

The complete system comes in the proven HPH quality in terms of design and workmanship.

GO ELECTRIC, GO SHARK RES!



INTRODUCING THE RETRACTABLE ELECTRIC SYSTEM (RES) –
YOUR ULTIMATE AVIATION COMPANION

Revolutionizing aviation, the **Retractable Electric System (RES)** is a **self-launcher** capable of effortlessly lifting up to 590 kg.

Crafted with precision and innovation, this high-voltage system features two easily removable batteries conveniently housed inside the fuselage.

Developed in collaboration with the renowned sailplane engine producer SOLO Aircraft Engines, the RES guarantees unparalleled comfort, safety, operational flexibility, and remarkable performance.

Experience seamless control with our fully automated system, effortlessly adjustable via a rotary dial on the intuitive control panel.

STANDARD FEATURES FOR YOUR COMFORT

- Low-noise propeller design
- Pilot interface: One single switch controls pylon extension and doors
- Choice of dual-battery or single-battery configuration
- Automatic centering of propeller after shutdown
- Engine bay door opening/closing with controlled sequencing for both retracted and extended pylon positions

ENGINE SYSTEM

| | |
|---------------------------------|-------------------|
| Engine | Emrax 228 |
| Propeller type | HPH-1E-140/RS-064 |
| Endurance | 80 – 120 km |
| Maximum static thrust | 96 daN |
| Maximum RPM | 3850 |
| Max power for take-off | 45 kW |
| Max continuous climb power | 28 kW |
| System weight (excl. batteries) | 24 kg (53 lbs) |

BATTERY SYSTEM

| | |
|--------------------------|---------------------------|
| Battery type | EMECTRIC BM 384 |
| Battery configuration | 96S4P |
| Battery voltage | 270V-400V |
| Usable energy | 3.4 – 4.2 kWh per battery |
| Battery weight (each) | 25 kg (55.1 lbs) |
| Max. number of batteries | 2 |

RES – ZERO EMISSIONS!

LOVE TO FLY SINCE 1964

HPH Sailplanes
Čáslavská 234
28401 Kutná Hora (CZ)
tel +420. 327. 512 633
info@hph.cz



© HPH 03/2025 | M8 Medien | mail@macht.de
Specifications subject to change without notice.

OK-2023

16:24
tRemain
0'00"



FIRE
ALARM TEST
ENGINE MAINT
SWITCH STARTER



DCU

CMD

Ready

78 %

2 V

EXT 14 °C

14 °C

2 14 °C

RETR 15 °C

FLASH

LX9070
3A

tds tsKE
km
Alt 497m
reqE E

BAT. 1
BAT. 2

000
OK2023
L008
VFR
FR
COD
NT
FILLING

