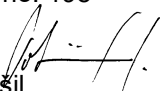


<b>HPH spol.s r.o.</b> Čáslavská 234 CZ284 01 Kutná Hora Czech Republic Tel/Fax 00420-327 513441 e-mail : <a href="mailto:info@hph.cz">info@hph.cz</a>	<b>Service bulletin</b>	<b>No.: HPH 304TS – 01 a)</b>
<p><b>Type :</b> TC no.: EASA.A.628 Model: HPH 304TS</p> <p>s/n: all</p> <p><b>Subject :</b> Inspection of a cable grommet in luggage compartment</p> <p><b>Urgency:</b> Action 1: Before next flight Action 2: Before next flight, if cable grommet is damaged or not present</p> <p><b>Reason:</b> If a cable grommet in luggage compartment is lost a repetitive movement of cables against uncovered edge of an opening in the compartment floor cover may damage the cables, preventing propeller extension and/or short actuator circuit.</p> <p><b>Action 1</b>      <b>Inspection of luggage compartment floor cover</b></p> <p>Check the rear luggage compartment floor (304TS-12-142) – there must be a grommet at the edge of the hole for the drive wiring (see Fig. 1 and 2). If the grommet is missing or damaged, continue with Action 2.</p> <div data-bbox="474 1223 1136 1753" data-label="Image"> </div> <p><i>Fig. 1 – Rear luggage area floor cover with grommet strip present</i></p>		
Page 1/3		
HPH, spol.s.r.o. Čáslavská 234 CZ284 01 Kutná Hora Czech republic	The technical content of this document has been produced in accordance with alternative procedure to DOA no. EASA.AP198.	Datum 11.06.2025 EASA DOA AP no. 198 Issued by  Jaroslav Potměšil

**HPH spol.s r.o.**

Čáslavská 234  
CZ284 01 Kutná Hora  
Czech Republic  
Tel/Fax 00420-327 513441  
e-mail : [info@hph.cz](mailto:info@hph.cz)

## Service bulletin

No.: HPH 304TS – 01 a)

### Action 1 (cont.):

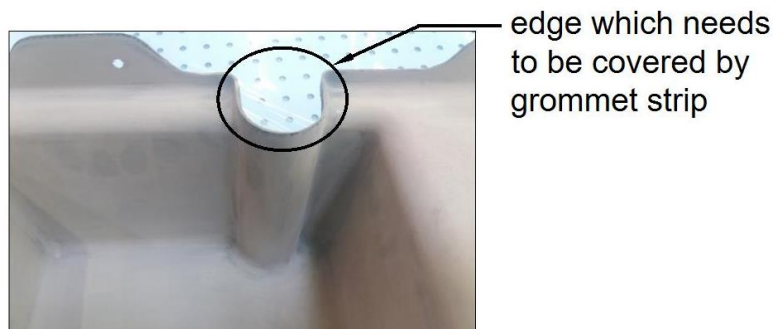


*Fig. 2 – Detail of floor cover with grommet strip*

### Action 2:

#### Grommet installation

If a grommet on the luggage compartment floor (see Fig.3) is missing or damaged (i.e. the edge is not completely covered), a new grommet shall be installed.

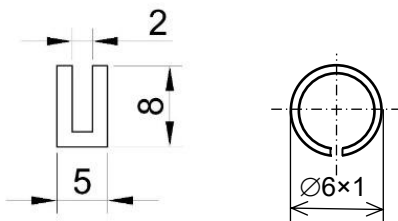


*Fig. 3 – Floor cover w/o grommet strip*

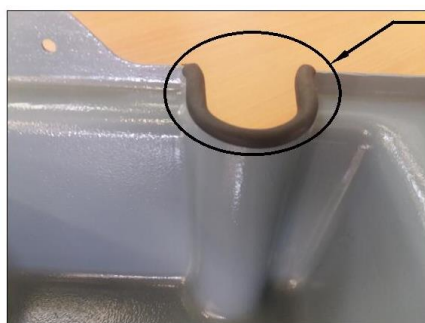
Install a rubber or plastic grommet strip on the edge (for an example of possible grommet cross-section see Fig. 3), alternatively a plastic or rubber tube (6mm diameter) cut lengthwise may be used. Use a contact glue to attach the grommet strip to the edge.

**HPH spol.s r.o.**

Čáslavská 234  
CZ284 01 Kutná Hora  
Czech Republic  
Tel/Fax 00420-327 513441  
e-mail : [info@hph.cz](mailto:info@hph.cz)

**Service bulletin****No.: HPH 304TS – 01 a)****Action 2 (cont.):**

*Fig. 4 – possible grommet strip cross-sections*



*grommet strip assembly*

*Fig. 5 – Floor cover with attached grommet*

**Material :**

- plastic / rubber grommet strip or a plastic / rubber tube (6mm diameter)
- Contact glue

**Weight :**

Negligible

**C.G. Position :**

Negligible

**Remarks:**

Actions may be performed by pilot/owner  
Action costs are covered by owner

Page 3/3

HPH, spol.s r.o.  
Čáslavská 234  
CZ284 01 Kutná Hora  
Czech republic

The technical content of this document has been produced in accordance with alternative procedure to DOA no. EASA.AP198.

Datum 11.06.2025  
EASA DOA AP no. 198  
Issued by

Jaroslav Potměšil